



East Metropolitan Health Service

Our Vision

Healthy people,
amazing care

*Koorda moort,
moorditj kwabadak*

Our Values





East Metropolitan Health Service

EMHS comprises an extensive hospital and health service network that aims to maintain and improve the health and wellbeing of more than 680,000 Western Australians in its catchment area.

- **Royal Perth Hospital**
- **Bentley Health Service**
- **Armadale Health Service**
- **Kalamunda District Community Hospital**
- **St John of God Midland Public Hospital**



EMHS Services

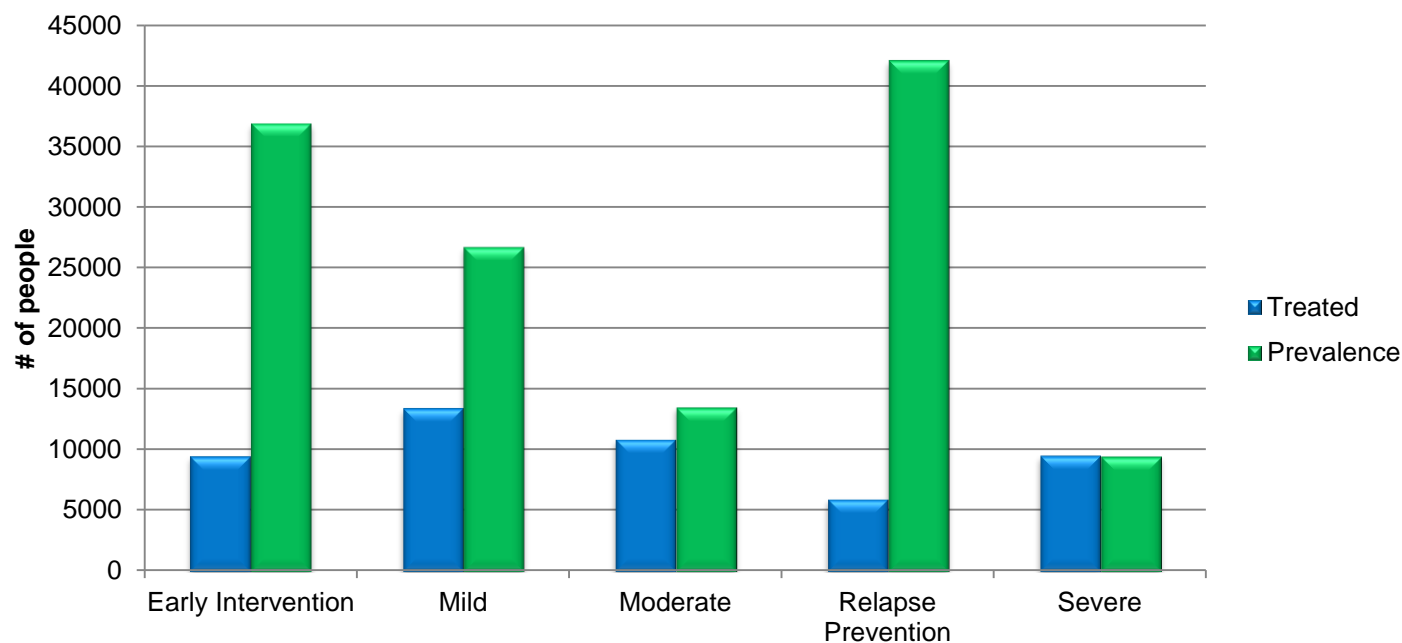
- Emergency and critical care
- State trauma
- Elective and emergency surgery
- General medical
- **Mental health**
- Inpatient and outpatient services
- Aged care
- Palliative care
- Rehabilitation
- Women's, children's and neonates services



Mental Illness in EMHS

- 1 in 5 West Australians over 12yrs has mental illness, at varying degrees of severity
- That is over 120 000 individuals in our EMHS community who need MH care
- Approximately 75% of which will access treatment

EMHS Mental Health: Prevalence and Treatment





How many people are coming through our ED doors and into our hospitals?

EMHS Emergency Services	2015/16	2016/17	2017/18	2018/19 YTD Jul-Dec
Total ED Presentations	168,012	196,087	203,140	105,225
% of which are Mental Health presentations	8%	8%	8%	8%
% of Mental Health presentations that are admitted	30%	31%	31%	32%

Top diagnosis for those admitted as an inpatients:

Acute and transient psychotic disorder; Schizophrenia; Acute stress reaction;
Depressive disorder

Top diagnosis for those discharged from ED to home/community:

Acute stress reaction; Anxiety disorder; Depressive episode; Panic disorder;
Schizophrenia

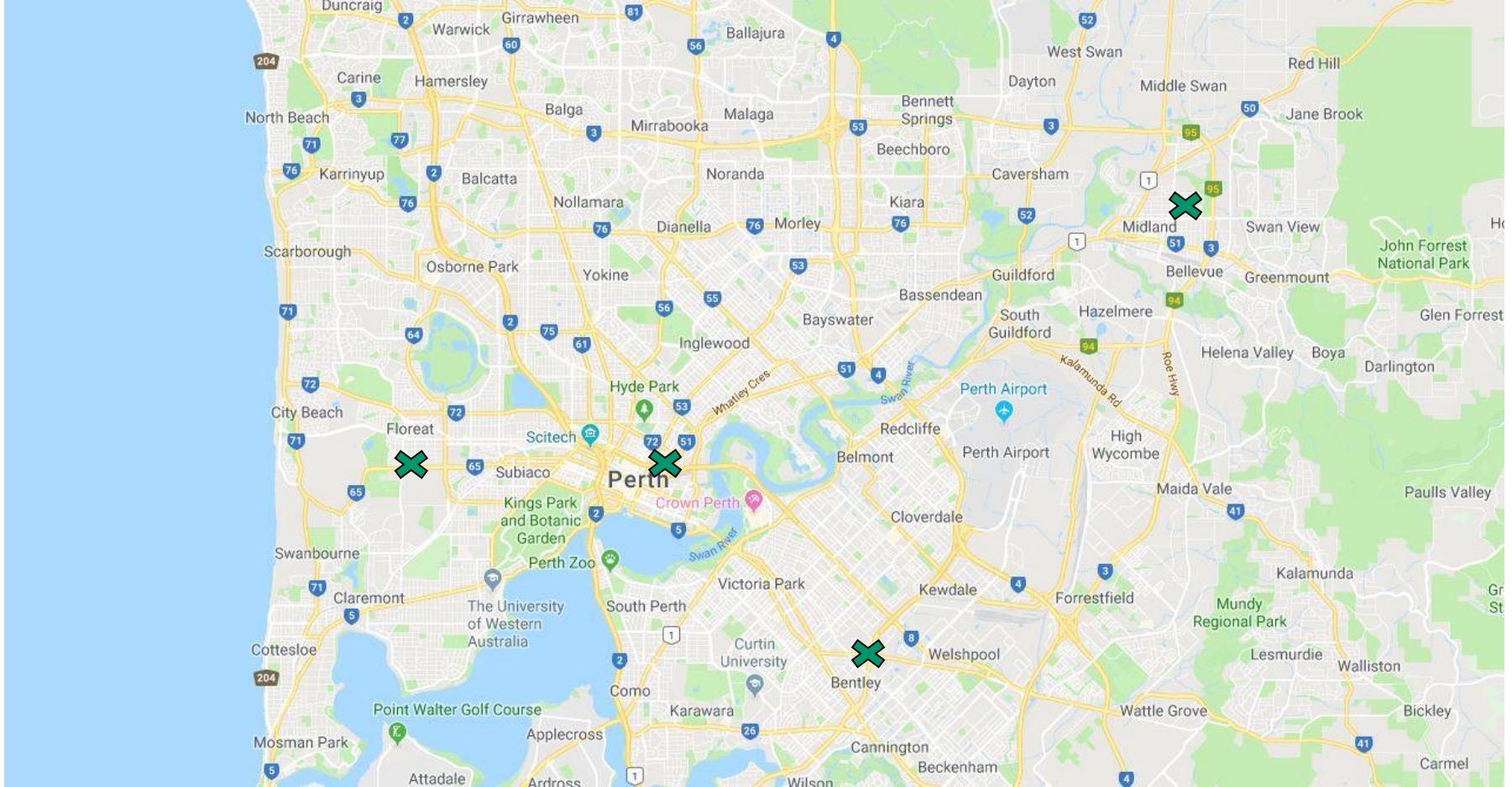


Mental Health Patient Flow Model

- Strengthen local inpatient bed demand management - EMHS responsible for meeting our local demand for beds
- Standardisation of practices and processes across services - where EMHS is unable to create a local bed a central team will facilitate patient flow across HSPs
- Bed access at the earliest point
- Two dedicated Mental Health Patient Flow Coordinators (PFCs) based at Royal Perth Hospital
- Near-live dashboard



Service 3, RPBG





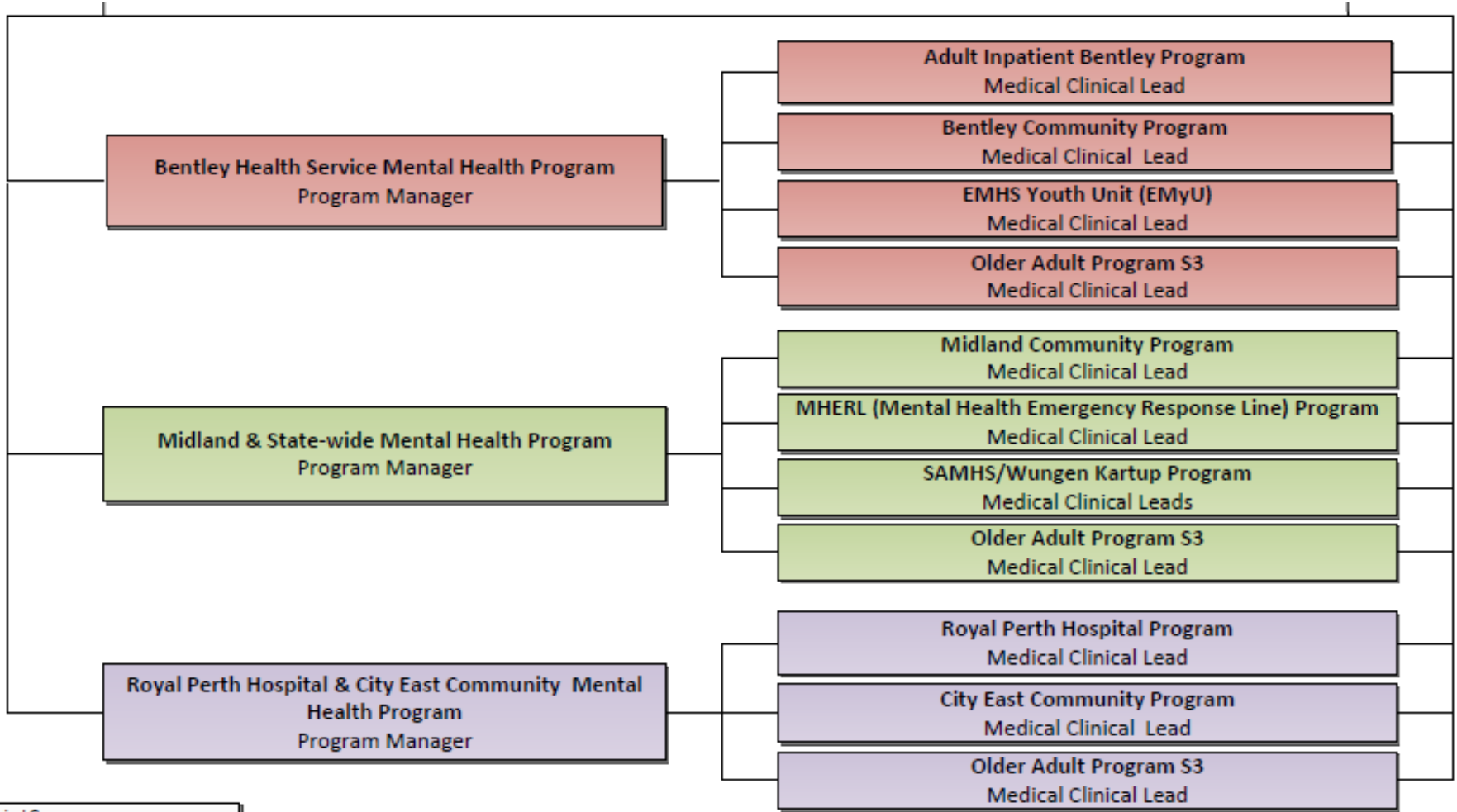
Service 3, RPBG

	Annual (estimated projection)
Beds	120
Admissions	2400
Average Length of Stay	18 days
ECT Procedures	650
Outpatient Referrals Accepted	3200
Average length of episode	67 days
RPH ED Presentations (Mental Health Related)	8000





Service 3 Group, RPBG



Clinical Governance



Armada Health Service

Inpatient Services

- Emergency Department
- Older Adult: 8 authorised (WA Mental Health Act 2014) beds
- Adult: 27 authorised open beds
- Adult: 6 authorised secure beds
- Consultation Liaison Service
- Theatre based ECT

Community Services

- Assessment and Treatment Team
- Clinical Treatment Team
- Older Adult Community Mental Health Service
- Early Episode Psychosis Program
- Residential facility; 5 beds Jacaranda House



St John of God Midland Public Hospital

Inpatient Services

- Emergency Department
- Adult: 25 authorised general adult open beds and 15 authorised general adult secure beds
- Older Adult: 16 authorised elderly open beds
- Mental Health Observation Unit (2019)





Mental Health service pathways

